

SECTION A-2  
PROGRAM MANAGEMENT



FOR THE COUNTY OF ORANGE  
AND  
THE ORANGE COUNTY FLOOD CONTROL DISTRICT



## SECTION A-2, PROGRAM MANAGEMENT

### A-2.0 PROGRAM MANAGEMENT

#### A-2.1 INTRODUCTION

Program management activities conducted by the County to implement the LIP involve the following activities:

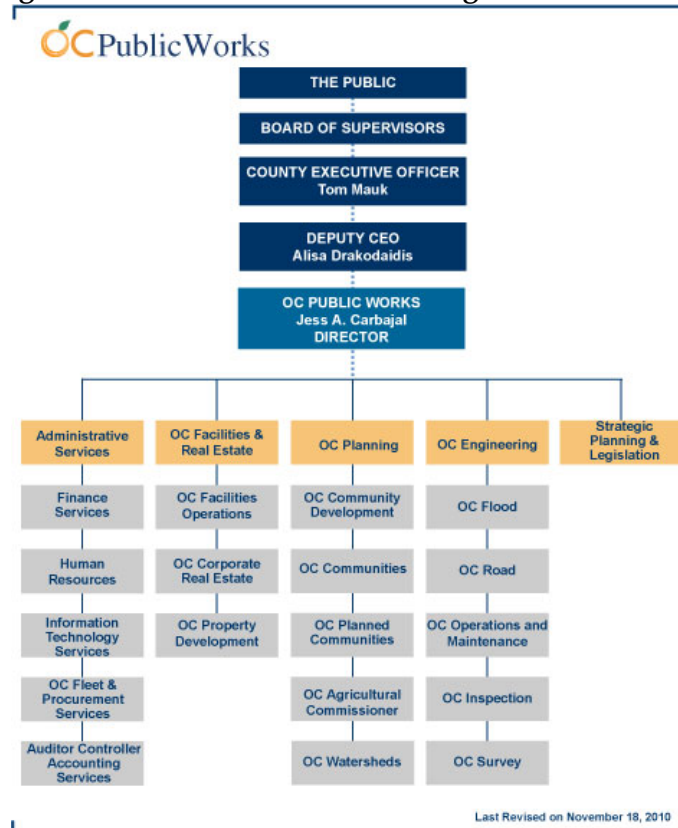
- Coordination as the Principal Permittee with other Permittees on program development through the 2007 DAMP; common program implementation (such as monitoring, public education and watershed programs); fiscal resources for shared budgets under the Implementation Agreement; and overall program direction.
- Coordination with internal County departments to implement the LIP.
- Fiscal analysis in preparing, approving and tracking shared cost budgets and individual cost budgets prepared by the County.
- Data management and compliance reporting based on common practices specified in the DAMP.

This section addresses these issues.

#### A-2.2 MAJOR MANAGEMENT ACTIVITIES

The County's internal implementation of the Stormwater Program/LIP and related 2007 DAMP programs is managed by OC Watersheds, a department within OC Public Works.

Figure A-2.1 - OC Public Works Organizational Chart





SECTION A-2, PROGRAM MANAGEMENT

The following are the primary representatives of the County’s stormwater programs:

Primary Contacts	County of Orange OC Public Works	
<b>Name</b>	Grant Sharp, County Stormwater Program Manager	Ruby Maldonado
<b>Department</b>	OC Watersheds	OC Planning/OC Communities
<b>Phone</b>	(714) 955-0674	(714) 667-8855
<b>Address</b>	2301 N. Glassell St., Orange 92865	300 N. Flower St., Santa Ana 92703
<b>E-mail Address</b>	<a href="mailto:grant.sharp@ocpw.ocgov.com">grant.sharp@ocpw.ocgov.com</a>	<a href="mailto:ruby.maldonado@ocpw.ocgov.com">ruby.maldonado@ocpw.ocgov.com</a>
Alternate Contacts	County of Orange OC Public Works	
<b>Name</b>	Chris Crompton	Greg Yi
<b>Division</b>	OC Watersheds	OC Engineering/OC Flood
<b>Phone</b>	(714) 955-0630	(714) 834-7537
<b>Address</b>	2301 N. Glassell St., Orange 92865	300 N. Flower St., Santa Ana 92703
<b>E-mail Address</b>	<a href="mailto:chris.crompton@ocpw.ocgov.com">chris.crompton@ocpw.ocgov.com</a>	<a href="mailto:greg.yi@ocpw.ocgov.com">greg.yi@ocpw.ocgov.com</a>

A-2.2.1 Management Framework

Management of the countywide program is performed through a committee structure with responsibilities and chairing assigned selectively to the Principal Permittee and the Permittees. These committees are as follows:

- *City Manager’s Water Quality Committee:* provides budget and overall program review and governance direction; comprised of several City Managers and is attended by County staff.
- *City Engineer’s Technical Advisory Committee:* serves in a program advisory role to the Permittees and implements policy previously established by the Permittees. The TAC is comprised of a City Engineer, or selected representative, from one city in each of the County Supervisorial Districts and a representative from the County of Orange.
- *Technical Advisory Committee/Planning Advisory Committee (TAC/PAC):* serves in a program advisory role to the Permittees and implements policy previously established by the Permittees pertaining to land development. The TAC/PAC is comprised of a City Engineer, or selected representative and a Planning Director or selected representative, from one city in each of the County Supervisorial Districts and a representative from the County of Orange.
- *General Permittee Committee:* provides a countywide forum to update designated representatives from each Permittee on program development.
- Sub-Committees/Task Forces:
  - Legal/Regulatory Authority Task Force



SECTION A-2, PROGRAM MANAGEMENT

- LIP/PEA Committee (formed in the fall of 2003 to oversee program management of the Municipal Activities, New Development/Significant Redevelopment, Construction and Existing Development Programs)
- Public Education Sub-Committee
- Permittee Advisory Group
- Trash and Debris Task Force
- Water Quality Ordinance Authorized Inspectors Sub-Committee
- Water Quality Monitoring & Science Task Force

The County participates in all of these committees through the representatives shown in **Table A-2.1**.

**Table A-2.1 - County of Orange Participation in Countywide Stormwater Program**

Committee/Task Force	Agency	Department	
City Manager Water Quality Committee	OC Public Works	Director, OC Public Works	
TAC		OC Watersheds	
		OC Engineering/OC Flood	
TAC/PAC		OC Watersheds	
		OC Planning	
PAG		OC Engineering/OC Flood	
		OC Engineering/OC Flood	
		OC Engineering/OC Road	
		OC Engineering/OC Inspection	
		OC Engineering/OC Operations & Maintenance	
		OC Planning	
		OC Watersheds	
		OC Community Resources	OC Parks
General Permittee Committee		OC Public Works	OC Watersheds
	OC Planning/OC Communities		
	OC Engineering/OC Inspection		
	OC Community Resources	OC Parks	
LIP/PEA Committee	OC Public Works	OC Watersheds	



SECTION A-2, PROGRAM MANAGEMENT

Committee/Task Force	Agency	Department
LIP/PEA Committee	OC Public Works	OC Planning/OC Communities
		OC Engineering/OC Inspection
	OC Community Resources	OC Parks
Legal/Regulatory Authority Task Force	OC Public Works	OC Watersheds
	County Counsel	County Counsel
Public Education Sub-Committee	OC Public Works	OC Watersheds
Authorized Inspectors Sub-Committee	OC Public Works	OC Watersheds
		OC Engineering/OC Inspection
		OC Engineering/OC Operations & Maintenance
	OC Community Resources	OC Parks
		OC Dana Point Harbor
Water Quality Monitoring and Science Task Force	OC Public Works	OC Watersheds
Trash & Debris Task Force		OC Watersheds

*County Internal Program Coordination*

To more effectively provide coordination with internal County departments in implementing the Stormwater Program, an internal NPDES committee has been formed which meets on a quarterly basis. Representatives from all County departments and agencies participate in this committee.

The responsibilities of County departments for the internal implementation of Stormwater Program/LIP activities are shown in **Table A-2.2**.



**Table A-2.2 - County Internal Stormwater Program Implementation**

<b>LIP Section/ Program Element</b>	<b>Agency/ Department</b>	<b>Activity</b>	<b>Responsibility Under 4th Term MS4 Permits/ 2007 DAMP</b>
<b>Section A-2- Program Management</b>	OC Public Works/OC Watersheds	Manages LIP and Implementation of County Stormwater Program	Prepares annual compliance reports
			Reviews shared budgets and prepares internal County budgets
			Coordinates with other Permittees for development and implementation of countywide program through 2007 DAMP
			Coordinates/ensures implementation by County departments; administers program
			Responds to phone, e-mail, and other input received by the County on water quality issues and dispatches appropriate personnel; records responses
			Follows up on problems with County compliance
<b>Section A-3 - Plan Development</b>	OC Public Works/OC Watersheds	Oversees development of new 2007 DAMP programs	Coordinates with County departments in the development of new programs and BMP effectiveness studies
<b>Section A-4 - Legal Authority</b>	County Counsel	Certification of adequate legal authority	Review of legal authority/modification of ordinances/ legal certification
<b>Section A-5 - Municipal Activities</b>	OC Public Works/OC Engineering/ Geomatics	Manages storm drain inventory/atlas	Provides Geographic Information System (GIS) updates to storm drain atlas



SECTION A-2, PROGRAM MANAGEMENT

LIP Section/ Program Element	Agency/ Department	Activity	Responsibility Under 4th Term MS4 Permits/ 2007 DAMP
	OC Engineering/ OC Operations & Maintenance		
	OC Engineering/ OC Flood		
<b>Section A-5 - Municipal Activities</b>	OC Public Works/OC Engineering/OC Operations & Maintenance	Operates and maintains storm drains and flood control facilities	Implements applicable model BMPs, reports actions taken to OC Watersheds
			Reports to OC Watersheds with changes in flood control maintenance program and facilities
	OC Engineering/ OC Operations & Maintenance	Operates and maintains corporate/municipal yards	Implements applicable model BMPs, reports actions taken to OC Watersheds
			Reports to OC Watersheds with changes in corporate/ municipal yards
	OC Engineering/ OC Operations & Maintenance	Maintains catch basin stenciling program	Implements stenciling program, reports actions taken to OC Watersheds
			Reports to OC Watersheds with changes in stenciling program
	OC Community Resources/OC Parks	Operates parks and recreational facilities	Implements applicable model BMPs, reports actions taken to OC Watersheds
			Reports to OC Watersheds with changes in parks facilities
	OC Community Resources/OC Dana Point Harbor	Operates and maintains Dana Point Harbor, administers tenant leases and management agreements for marinas, hotel, and shopping center	Implements applicable model BMPs, reports actions taken to OC Watersheds



SECTION A-2, PROGRAM MANAGEMENT

LIP Section/ Program Element	Agency/ Department	Activity	Responsibility Under 4th Term MS4 Permits/ 2007 DAMP
<b>Section A-5 - Municipal Activities</b>	Sheriff-Coroner Department	Operates and maintains Sheriff facilities	Implements applicable model BMPs, reports actions taken to OC Watersheds
			Reports to OC Watersheds with changes in sheriff's facilities
	OC Community Resources/OC Public Libraries	Operates and maintains County library facilities	Implements applicable model BMPs, reports actions taken to OC Watersheds
			Reports to OC Watersheds with changes in library facilities
	Social Services Agency	Operates and maintains Social Service Agency facilities	Implements applicable model BMPs, reports actions taken to OC Watersheds
			Reports to OC Watersheds with changes in Social Service's facilities
	Probation Department	Operates and maintains Probation Department facilities	Implements applicable model BMPs, reports actions taken to OC Watersheds
			Reports to OC Watersheds with changes in Probation's facilities
	OC Public Works/OC Facilities/Real Estate & Asset Management	Operates and maintains public parking facilities	Implements applicable model BMPs, reports actions taken to OC Watersheds
			Updates OC Watersheds with changes in parking facilities operated
	John Wayne Airport	Operates and maintains John Wayne Airport, administers tenant leases and management agreements for airlines and vendors	Implements applicable model BMPs, reports actions taken to OC Watersheds



SECTION A-2, PROGRAM MANAGEMENT

LIP Section/ Program Element	Agency/ Department	Activity	Responsibility Under 4th Term MS4 Permits/ 2007 DAMP
<b>Section A-5 - Municipal Activities</b>	OC Public Works/OC Facilities/ Facility Operations	Maintains OC Public Works facilities and other department facilities as requested	Implements applicable model BMPs, reports actions taken to OC Watersheds
			Updates OC Watersheds with changes to County-owned facilities
	OC Public Works/ Administration/ OC Fleet Services	Manages and maintains County vehicle programs	Implements applicable model BMPs, reports actions taken to OC Watersheds
			Updates OC Watersheds with changes to County vehicle programs
	OC Public Works/OC Engineering/ Operations & Maintenance	Manages and implements street sweeping	Implements applicable model BMPs, reports actions taken to OC Watersheds
			Updates OC Watersheds with changes to street sweeping
	All County Agencies and Departments	Manage and implement Integrated Pest Management Program	Implements applicable model BMPs, reports actions taken to OC Watersheds
			Updates OC Watersheds with changes to pesticide and fertilizer programs
	All County Agencies and Departments	Manage and implement landscape maintenance programs including lakes	Implements applicable model BMPs, reports actions taken to OC Watersheds
			Updates OC Watersheds with changes to landscape maintenance programs
	OC Waste & Recycling	Manages and implements waste recycling and litter control programs	Implements applicable model BMPs, reports actions taken to OC Watersheds



SECTION A-2, PROGRAM MANAGEMENT

LIP Section/ Program Element	Agency/ Department	Activity	Responsibility Under 4th Term MS4 Permits/ 2007 DAMP
			Updates OC Watersheds with changes to waste recycling and litter control programs
<b>Section A-6 - Public Education</b>	OC Public Works/ OC Watersheds	Manages education/outreach program	Attends public meetings on water quality issues
			Provides training and guidance materials to public and County staff
			Disseminates information in the unincorporated County
			Develops County versions of countywide education materials as appropriate
			Participates in multiple outreach events each year
	OC Public Works/OC Planning OC Community Resources/OC Parks OC Community Resources/OC Public Libraries OC Community Resources/OC Animal Control		Provides information to public and businesses at County counters.
	OC Community Resources/OC Dana Point Harbor		Provides information to restaurants, businesses and boaters, implements Clean Marina Program
	Health Care Agency		Provides information to restaurants



SECTION A-2, PROGRAM MANAGEMENT

LIP Section/ Program Element	Agency/ Department	Activity	Responsibility Under 4th Term MS4 Permits/ 2007 DAMP
<b>Section A-7 - New Development</b>	OC Public Works/OC Planning/ OC Communities	Administers implementation of Stormwater Program related to new development/ redevelopment projects	Ensures compliance with requirements for new development and significant redevelopment projects.
		Manages General Plan	Reviews the General Plan for water quality protection
		Manages environmental planning review	Implements use of CEQA checklist to review water quality issues on proposed projects
			Reviews development for water quality issues
	OC Public Works/OC Planning/ OC Communities	Processes building/grading permits	Advises applicants of water quality requirements
			Verifies plan compliance with water quality requirements
			Coordinates with OC Watersheds for project tracking and inspection of water quality requirements
	OC Public Works/OC Engineering/ Project Management  OC Public works/OC Engineering/ OC Inspection	Manages public works projects	Verifies plan compliance with water quality requirements in public works projects
			Coordinates with OC Watersheds for project tracking and inspection of water quality requirements in public works projects



SECTION A-2, PROGRAM MANAGEMENT

LIP Section/ Program Element	Agency/ Department	Activity	Responsibility Under 4th Term MS4 Permits/ 2007 DAMP
<b>Section A-8 - Construction</b>	OC Community Resources/OC Dana Point Harbor	Manages the Dana Point Harbor Revitalization Plan	Verifies plan compliance with water quality requirements
	OC Public Works/OC Planning/ OC Communities	Processes building/grading permits	Advises applicants of water quality requirements
			Verifies plan and NOI compliance with water quality requirements, reports actions taken to OC Watersheds
		Manages oversight of construction site inventory and prioritization	Inventories, prioritizes and maps construction sites
		Manages NPDES inspections at construction sites	Implement inspections, requires corrective actions to be taken, reports actions taken to OC Watersheds
	OC public Works/OC Engineering/ OC Inspection  OC Public Works/OC Facilities/AE Project Management	Manages public works projects and Capital Improvement Projects (CIP)	Verifies plan compliance with water quality requirements in public works projects and CIPs
			Coordinates project tracking and inspection of water quality requirements in public works projects and CIPs, reports actions taken to OC Watersheds
<b>Section A-9 - Existing Development</b>	OC Public Works/OC Watersheds	Manages oversight of the commercial, industrial, residential inspection program	Inventories, prioritizes and maps facilities



SECTION A-2, PROGRAM MANAGEMENT

LIP Section/ Program Element	Agency/ Department	Activity	Responsibility Under 4th Term MS4 Permits/ 2007 DAMP
			Implement inspections, require corrective actions to be taken, report actions taken to OC Watersheds
		Interacts with businesses and the public	Provides information to industrial and commercial businesses and the public
	OC Community Resources/OC Dana Point Harbor	Operates and maintains Dana Point Harbor, administers tenant leases and management agreements for marinas, hotel, and shopping center	Implements applicable model BMPs, inspects commercial businesses for stormwater compliance, reports actions taken to OC Watersheds
	John Wayne Airport	Operates and maintains John Wayne Airport, administers tenant leases and management agreements for airlines and vendors	Implements applicable model BMPs, reports actions taken to OC Watersheds
	OC Public Works/OC Planning/ Code Enforcement	Code Enforcement	Responsible for code enforcement in unincorporated County areas
	OC Community Resources/OC Animal Control	Issues licenses for commercial animal boarding facilities	Inspects commercial animal boarding facilities
<b>Section A-10 - ID/IC</b>	OC Public Works/OC Watersheds	Coordinates and manages County ID/IC program	See Section <b>A-10</b> of the County's LIP for a description of ID/IC responsibilities
<b>Section A-11 - Water Quality Monitoring</b>	OC Public Works/OC Watersheds	Manages countywide water quality program	Initiate follow up through ID/IC program for problems identified through the water quality monitoring program
		Manage industrial monitoring	Require industrial monitoring pursuant to 2007 DAMP protocol



SECTION A-2, PROGRAM MANAGEMENT

LIP Section/ Program Element	Agency/ Department	Activity	Responsibility Under 4th Term MS4 Permits/ 2007 DAMP
<b>Section A-12 - Watersheds</b>	OC Public Works/OC Watersheds	Coordinates countywide activities on a Watershed basis.	Develop watershed documents, <b>Appendix D</b> of 2007 DAMP

A-2.2.2 Agreement for Program Implementation

An Implementation Agreement among the 36 Permittees defines the roles, responsibilities, and cost sharing formulas governing the program. The County as the Principal Permittee recently executed the updated cooperative agreement with all 36 Permittees.

A-2.2.3 NPDES Permit Responsibilities

The responsibilities of the County of Orange as the Principal Permittee and Permittees as a whole are defined within the Implementation Agreement, the NPDES Permits, or as otherwise identified within separate funding agreements. The County is responsible for the management of storm drain systems within its jurisdictions and is:

- Implementing management programs, monitoring programs, implementation plans and all BMPs outlined in the DAMP/LIP within its jurisdiction, and taking any other actions as may be necessary to meet the MEP standard.
- Coordinating among their internal departments and agencies, as appropriate, to facilitate the implementation of this order and the DAMP/LIP.
- Establishing and maintaining adequate legal authority, as required by the Federal Storm Water Regulations.
- Conducting storm drain system inspections and maintenance in accordance with the criteria developed by the Principal Permittee.
- Taking appropriate enforcement actions for illicit discharges to the MS4 systems owned or controlled by the County.

Additional activities include, but are limited to, the following:

- Participating in the General Permittee Committee comprised of the Principal Permittee and one representative of each Permittee.
- Reviewing, approving, implementing, and commenting on all plans, strategies, management programs, and monitoring programs, as developed by the Principal Permittee or any Permittee subcommittee to comply with this order.



## SECTION A-2, PROGRAM MANAGEMENT

---

- Pursuing enforcement actions as necessary to ensure compliance with the stormwater management programs, ordinances and implementation plans, including physical elimination of undocumented connections and illicit discharges to drainage systems owned or controlled by the Permittees.
- Conducting and coordinating with the Principal Permittee any surveys and characterizations needed to identify pollutant sources and drainage areas.
- Submitting storm drain system maps, including any periodic revisions, with each annual report.
- Responding to emergency situations, such as accidental spills, leaks, illicit discharges, illicit connections, etc., to prevent or reduce the discharge of pollutants to storm drain systems and Waters of the US.
- Preparing and submitting all required reports to the Principal Permittee in a timely manner.
- Reviewing, approving and commenting on budgets, plans, strategies, management programs and monitoring programs developed by the Principal Permittee, sub-committees or task forces.

### A-2.2.4 NPDES Reporting Requirements

#### *Santa Ana Region Reporting Requirements*

**Appendix C** of the DAMP now forms the reporting and program assessment component and reflects the format of the DAMP. The reporting format and requirements for the information to be collected and submitted within **Appendix C** supports preparation of an Annual Progress Report that comprises:

- A review of the status of program implementation and compliance (or non-compliance) with the Permit;
- An assessment of the effectiveness of control measures established under the illicit discharge elimination program and the Drainage Area Management Plan;
- An assessment of control measures and their effectiveness in addressing pollutants causing or contributing to an exceedance of water quality objectives in receiving waters that are on the 303(d) list of impaired waters;
- An overall program assessment that may be based on the California Stormwater Quality Association May 2007 guidance for assessing program activities at the various outcome levels or other methodology;
- A plan and schedule to address program modifications and improvements identified during the program assessment;



## SECTION A-2, PROGRAM MANAGEMENT

---

- A summary and analysis of monitoring results from the previous year and any changes to the monitoring program for the following year;
- A unified fiscal accountability analysis;
- A draft workplan which describes the proposed implementation of the DAMP for next fiscal year;
- Major changes in any previously submitted plans/policies; and
- An assessment of the Permittees compliance status with the Receiving Water Limitations, including any proposed modifications to the DAMP if the Receiving Water Limitations are not fully achieved.

In addition to the Annual Progress Reports, the required submittals may also include any other requirements specified by the Regional Boards pursuant to permit conditions, California Water Code Section 13225 and 13267, or other regulatory provisions. In preparing the Annual Progress Reports, the County will be coordinating with the Principal Permittee and other Permittees to develop common data management and tracking tools.

### *San Diego Region Reporting Requirements*

- (1) **Copermittees:** The County generates individual JRMP Annual Reports which cover implementation of its jurisdictional activities during the past annual reporting period. Each Annual Report verifies and documents compliance with this Order as directed in this section. The County shall retain records through 2015, available for review, that document compliance with each requirement of this Order. The County shall submit to the Principal Copermittee its individual JRMP Annual Report by the date specified by the Principal Copermittee. The reporting period for these annual reports must be the previous fiscal year. For example, the report submitted September 30, 2010 must cover the reporting period July 1, 2009 to June 30, 2010.
- (2) **Principal Copermittee:** The Principal Copermittee is responsible for collecting and assembling each Copermittee's individual JRMP Annual Report. The Principal Copermittee must submit Unified JRMP Annual Reports to the Regional Board by September 30 of each year, beginning on September 30, 2011. The Unified JRMP Annual Report must contain the 13 individual JRMP Annual Reports.
- (3) Each JRMP Annual Report must contain, at a minimum, the following information:
  - (a) Information required to be reported annually in Directive H (Fiscal Analysis) of this Order; (page 77);
  - (b) Information required to be reported annually in Directive J (Program Effectiveness) of this Order; (pages 79-82);
  - (c) The completed Reporting Checklist found in Attachment D-2; and
  - (d) Information for each program component by watershed as described in the following Table 9, under Directive K, Reporting, pages (86-89).



SECTION A-2, PROGRAM MANAGEMENT

Each section includes its corresponding reporting requirements.

Program Component	Reporting Requirement
New Development	1. Updated relevant sections of the General Plan and environmental review process and a description of planned updates within the next annual reporting period, if applicable.
	2. Revisions to the local sewer system management plan (SSMP), including where applicable: (a) Identification and summary of where the SSMP fails to meet the requirements of this Order; (b) Updated procedures for identifying pollutants of concern for each Priority Development Project; (c) Updated treatment BMP ranking matrix; and (d) Updated site design and treatment control BMP design standards.
	3. Verification that site design, source control, and treatment BMPs were required on all applicable Priority Development Projects.
	4. Description of the application of LID and site design BMPs in the planning and approval process.
	5. Description of projects subject to the local waiver provision for numeric sizing of treatment control BMP requirements.
	6. Description and summary of the LID site design BMP substitution program, if applicable.
	7. Description and summary of the process to verify compliance with SSMP requirements.
	8. Updates to the BMPs that are listed in the local SSMP as options for treatment control.
	9. Description of the treatment control maintenance tracking process and verification that the requirements of this Order were met during the reporting period; (a) Updated watershed-based database of approved treatment control BMPs and treatment control BMP maintenance within its jurisdiction, including updates to the list of high-priority treatment BMPs.
	10. Description of the process for identifying and evaluating hydrologic conditions of concern and requiring a suite of management measures within all Priority Development Projects to protect downstream beneficial uses and prevent adverse physical changes to downstream stream channels.



SECTION A-2, PROGRAM MANAGEMENT

	<p>11. Description of enforcement activities applicable to the new development and redevelopment component and a summary of the effectiveness of those activities.</p>
<p>Construction</p>	<p>1. Updated relevant ordinances and description of planned ordinance updates within the next annual reporting period, if applicable.</p>
	<p>2. A description of procedures used for identifying priorities for inspecting sites and enforcing control measures which consider the nature of the construction activity, topography, and the characteristics of soils and receiving water quality.</p>
	<p>3. Designated minimum and enhanced BMPs.</p>
	<p>4. Summary of the inspection program, including the following information: (a) Number and date of inspections conducted at each facility, including the facility address; (b) Number of facilities lacking adequate BMPs; (c) The BMP violations identified during the inspection by facility; (d) Number, date, and types of enforcement actions by facility; (e) Narrative description of inspection findings and follow-up activities for each facility.</p>
<p>Municipal</p>	<p>1. Updated source inventory.</p>
	<p>2. Changes to the designated municipal BMPs.</p>
	<p>3. Descriptions of procedures to assure that flood management projects assess the impacts on the water quality of receiving water bodies.</p>
	<p>4. Summary and assessment of BMPs implemented at retrofitted flood control structures, including: (a) List of projects with BMP retrofits; and (b) List and description of structures retrofitted without BMPs.</p>
	<p>5. Description and assessment of the municipal structural treatment control operations and maintenance activities, including: (a) Number of inspections and types of facilities; and (b) Summary of findings.</p>
	<p>6. Description of the municipal areas/facilities operations and maintenance activities, including: (a) Number and types of facilities maintained; (b) Amount of material removed and how that material was disposed; and (c) List of facilities planned for bi-annual inspections and the justification.</p>



SECTION A-2, PROGRAM MANAGEMENT

	<p>7. Description of the municipal areas/programs inspection activities, including: (a) Number and date of inspections conducted at each facility; (b) Number of facilities lacking adequate BMPs; (c) The BMP violations identified during the inspection by facility; (d) Number, date and types of enforcement actions by facility; (e) Narrative description of inspection findings and follow-up activities for each facility.</p>
	<p>8. Description of activities implemented to address sewage infiltration into the MS4.</p>
<p>Commercial / Industrial</p>	<p>1. Annual inventory of commercial / industrial sources.</p> <p>2. Summary of the inspection program, including the following information: (a) Number and date of inspections conducted at each facility including the facility address; (b) Number of facilities lacking adequate BMPs; (c) The BMP violations identified during the inspection by facility; (d) Number, date, and types of enforcement actions by facility; (e) Narrative description of inspection findings and follow-up activities for each facility.</p> <p>3. Changes to designated minimum and enhanced BMPs.</p> <p>4. A list of industrial sites, including each name, address, and SIC code, that the Copermittee suspects may require coverage under the General Industrial Permit, but has not submitted an NOI.</p>
<p>Residential</p>	<p>1. Updated minimum BMPs required for residential areas and activities.</p> <p>2. Quantification and summary of applicable runoff and storm water enforcement actions within residential areas and activities.</p> <p>3. Description of efforts to manage runoff and storm water pollution in common interest areas.</p>
<p>Illicit Discharge Detection and Elimination</p>	<p>1. Changes to the legal authority to implement Illicit Discharge Detection and Elimination activities.</p> <p>2. Changes to the established investigation procedures.</p> <p>3. Public reporting mechanisms, including phone numbers and web pages.</p> <p>4. All data and assessments from the Dry Weather Effluent Analytical Monitoring activities.</p> <p>5. Response criteria developed for water quality data and notifications.</p>



SECTION A-2, PROGRAM MANAGEMENT

	6. Summaries of illicit discharges (including spills and water quality data events) and how each significant case was resolved.
	7. A description of instances when field screening and analytical data exceeded action levels, but for which no investigation was conducted.
	8. A description of enforcement actions taken in response to investigations of illicit discharges and a description of the effectiveness of those enforcement measures.
	9. A description of controls to prevent infiltration of seepage from municipal sanitary sewers to municipal separate storm sewer systems.
Work Plan	Priorities, strategy, implementation schedule and effectiveness evaluation.

(4) Each JRMP Annual Report must also include the following information regarding non-storm water discharges (see Section B.2. of this Order, pages 19-20):

- (a) Identification of non-storm water discharge categories identified as a source of pollutants to waters of the U.S;
- (b) A description of ordinances, orders, or similar means to prohibit non-storm water discharge categories identified under section B.2 above;
- (c) Identification of any control measures to be required and implemented for non-storm water discharge categories identified as needing said controls by the Regional Board; and
- (d) A description of a program to address pollutants from non-emergency fire fighting flows identified by the Copermittee to be significant sources of pollutants.

Directive D-2 provides the following Annual Report checklist:

**Jurisdictional Runoff Management Program Annual Report Checklist**

In the JRMP Annual Report each Copermittee shall provide an Annual Report Checklist. The Annual Report Checklist must be no longer than 2 pages, be current as of the 1<sup>st</sup> day of the rainy season of that year, and include a signed certification statement. The Annual Report Summary Checklist must provide the following information:

Order Requirements

Were All Requirements of this Order Met?

Construction

Number of Active Sites

Number of Inactive Sites

Number of Sites Inspected

Number of Inspections



## SECTION A-2, PROGRAM MANAGEMENT

---

Number of Violations  
Number of Construction Enforcement Actions Taken

### New Development

Number of Development Plan Reviews  
Number of Grading Permits Issued  
Number of Projects Exempted from Interim/Final Hydromodification Requirements

### Post Construction Development

Number of Priority Development Projects  
Number of SUSMP Required Post-Construction BMP Inspections  
Number of SUSMP Required Post-Construction BMP Violations  
Number of SUSMP Required Post-Construction BMP Enforcement Actions Taken

### Illicit Discharges and Connections

Number of ID/IC Inspections  
Number of ID/IC Detections by Staff  
Number of ID/IC Detections from the Public  
Number of ID/IC Eliminations  
Number of ID/IC Violations  
Number of ID/IC Enforcement Actions Taken

### MS4 Maintenance

Number of Inspections Conducted  
Amount of Waste Removed  
Total Miles of MS4 Inspected

### Municipal/Commercial/Industrial

Number of Facilities  
Number of Inspections Conducted  
Number of Facilities Inspected  
Number of Violations  
Number of Enforcement actions

### A-2.2.5 Fiscal Analysis

Effective programs require adequate funding to implement planned activities. Since the adoption of the permits, the County has provided funding for the countywide shared-cost budget and jurisdictional compliance activities. The County uses the reporting format shown in **Tables A-2.3, A-2.4 and A-2.5** to report on capital, operations and maintenance and funding sources in the annual progress report.



SECTION A-2, PROGRAM MANAGEMENT

Table A-2.3 - Fiscal Analysis for County Capital Costs

LIP Program Elements		FY 2010-11 Costs	Projected FY 2011-12 Costs
Public Project - BMPs	BMPs, Retrofits, Facilities Constructed as a Component of Some Other Facility		
Construction BMPs for Public Construction Projects	Cost for Water Quality BMPs Used During Construction		
Other Capital Projects/Major Equipment Purchases	Capital Improvements Related to the Program that are not Strictly BMPs and Costs for Purchase of Major Equipment		
<b>Totals</b>			



SECTION A-2, PROGRAM MANAGEMENT

**Table A-2.4 - Fiscal Analysis for County Operations and Maintenance Costs**

LIP Program Elements		FY 2010-11 Costs	Projected FY 2011-12 Costs
Supportive of Program Administration (LIP Section 2.0)	Meetings/Committees	This information will be collected annually in Section C-2 of Appendix C.	This information will be collected annually in Section C-2 of Appendix C.
	Administrative/Reporting		
Plan Development (LIP Section 3.0)	New Program Development/BMP Effectiveness Studies		
Municipal Activities (LIP Section 5.0)	Litter Control		
	Household Hazardous Waste Collection/Recycling		
	Drainage Facility Maintenance		
	Catch Basin Stenciling		
	Street Sweeping		
	Environmental Performance Reporting Program		
	Public Property & Street Chemical Spill Response		
	Pesticide & Fertilizer Management		
	BMPs Incorporated into Public Work Capital Projects		
	Public Information (LIP Section 6.0)		
Household Hazardous Waste Collection			
New Development/Significant Redevelopment (LIP Section A-7.0)	Requiring New Development BMPs (Supportive of Planning, etc.)		
Construction (LIP Section A-8.0)	Requiring Construction BMPs (Supportive of Plan Check & Inspection) - Private		
	Requiring Construction BMPs (Supportive of Plan Check & Inspection) - Public		
Existing Development (LIP Section A-9.0)	Industrial/Commercial Facility Inspections		
Illegal Discharges/Illicit Connections (LIP Section A-10.0)	Illicit Connection Inspections		
	Illegal Discharge Investigations, Spill Response		
County Contribution to Countywide Program	County Contribution to Cost Share, Permit Costs		
<b>Totals</b>			



SECTION A-2, PROGRAM MANAGEMENT

**Table A-2.5 - Fiscal Analysis for County Funding Sources**

County of Orange/OCFCD  
Fiscal Analysis Summary

**FUNDING SOURCES**

DAMP FUNDING SOURCES	FUNDING PERCENTAGES	
	FISCAL YEAR	FISCAL YEAR
GENERAL FUND	This information will be collected annually in Section C-2 of Appendix C.	This information will be collected annually in Section C-2 of Appendix C.
UTILITY TAX/CHARGES		
SEPARATE UTILITY BILLING ITEM		
GAS TAX		
SPECIAL DISTRICT FUND		
OTHERS (Specify) Sanitation Fee Benefit assessment Fleet Maintenance Fund Community Services District Water Fund Sewer & Storm Drain Maintenance Fee		
TOTALS (must add up to 100%)		